

TYPE B XLOCK FITTING

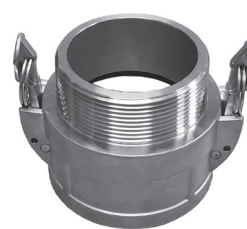
FEMALE COUPLER X MALE NPT THREAD

MATERIAL: Aluminum, 316 Stainless Steel
GASKET: Nitrile
CAM ARM: 304 Stainless Steel
BRANDING: Rubberworx

ALUMINUM



316 STAINLESS STEEL



Type B fitting is typically threaded into a pipe or manifold that interfaces with a hose assembly, which is frequently connected and disconnected. XLOCK fittings are specially engineered for use with liquids exclusively.

Size	Aluminum Part #	316 Stainless Steel Part #	Max. Width With Cam Arms Closed	Overall Length (L)	Exposed Length (E)	Minimum ID (I)	Max. Width With Cam Arms Extended
1.50"	RBX-B-AL-150-XL	RBX-B-316-150-XL	3.83"	2.937"	2.000"	1.3750"	7.967"
2.00"	RBX-B-AL-200-XL	RBX-B-316-200-XL	4.21"	3.218"	2.156"	1.7500"	8.340"
3.00"	RBX-B-AL-300-XL	RBX-B-316-300-XL	5.68"	4.000"	2.468"	2.8120"	10.435"
4.00"	RBX-B-AL-400-XL	RBX-B-316-400-XL	6.78"	4.218"	2.593"	3.7500"	11.538"
6.00"	RBX-B-AL-600-XL	RBX-B-316-600-XL	9.34"	4.750"	2.844"	5.7500"	16.058"